



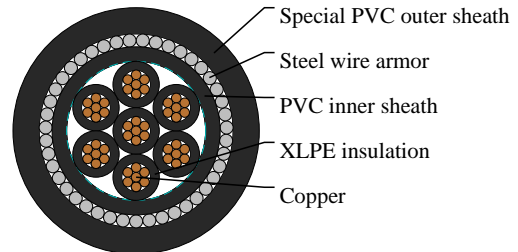
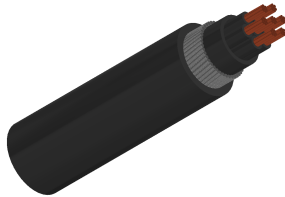
# Caledonian

Cables For Oil Industry  
www.caledonian-cables.com

marketing@caledonian-cables.com

## 600V/1000V XLPE Insulated Steel Wire Armored Cable to IEC 60502-1

XLPE Insulated Steel Wire Armored Cable 7C2.5



### APPLICATIONS

These cables are used for electricity supply in low voltage installation system. They are suitable for installation in indoors and outdoors, in cable ducts, under ground, in power and switching stations, local energy distributions, industrial plants, where require chemical and mechanical protections.

### CABLE CONSTRUCTION

Conductor: Stranded copper

Insulation: XLPE

Inner sheath: PVC. Color: black

Armor: Galvanized steel wires

Sheath: Special PVC. Color: black

### COLOUR CODE

Above 5 cores: Black core printed with white numbers

### PHYSICAL AND THERMAL PROPERTIES

Rated voltage: 600V/1000V

Fire retardance: IEC 60332-3-22

Operating temperature: -20~60°C

Max. conductor operating temperature: 90°C

Chemical resistance: Aliphatic and aromatic hydrocarbon resistance

### DIMENSION AND PARAMETERS

No. of Cores	Nominal Cross-sectional Area	Conductor Class	Nominal Diameter over Insulation	Diameter Over Inner Sheath	Overall Diameter (min.)	Overall Diameter (max.)	Nominal Diameter Over Armour	Approx. Weight
	mm <sup>2</sup>		mm	mm	mm	mm	mm	kg/km
7	2.5	Stranded, Class 2	3.31	12.2	17.75	19.6	14.7	732